

# BRIDGE POINTE

KIMBERLING CITY, MO



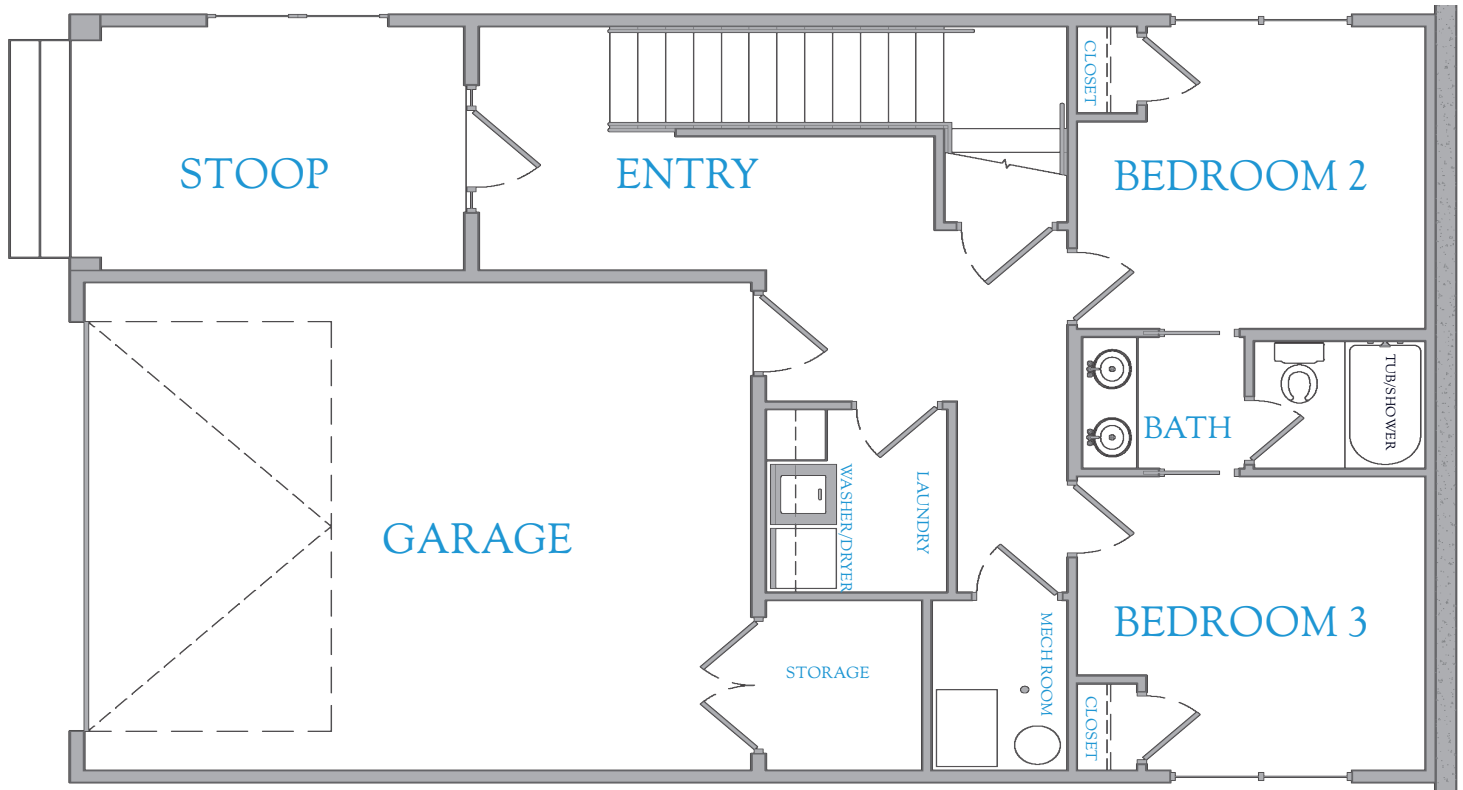
Renderings and other details may change at the discretion of the developer.  
Subject to availability. Representative only.





LAKEVIEW

## LOWER FLOOR



- GARAGE
- LAUNDRY

- 2 LARGE BATHROOMS  
WITH JACK & JILL  
BATHROOM

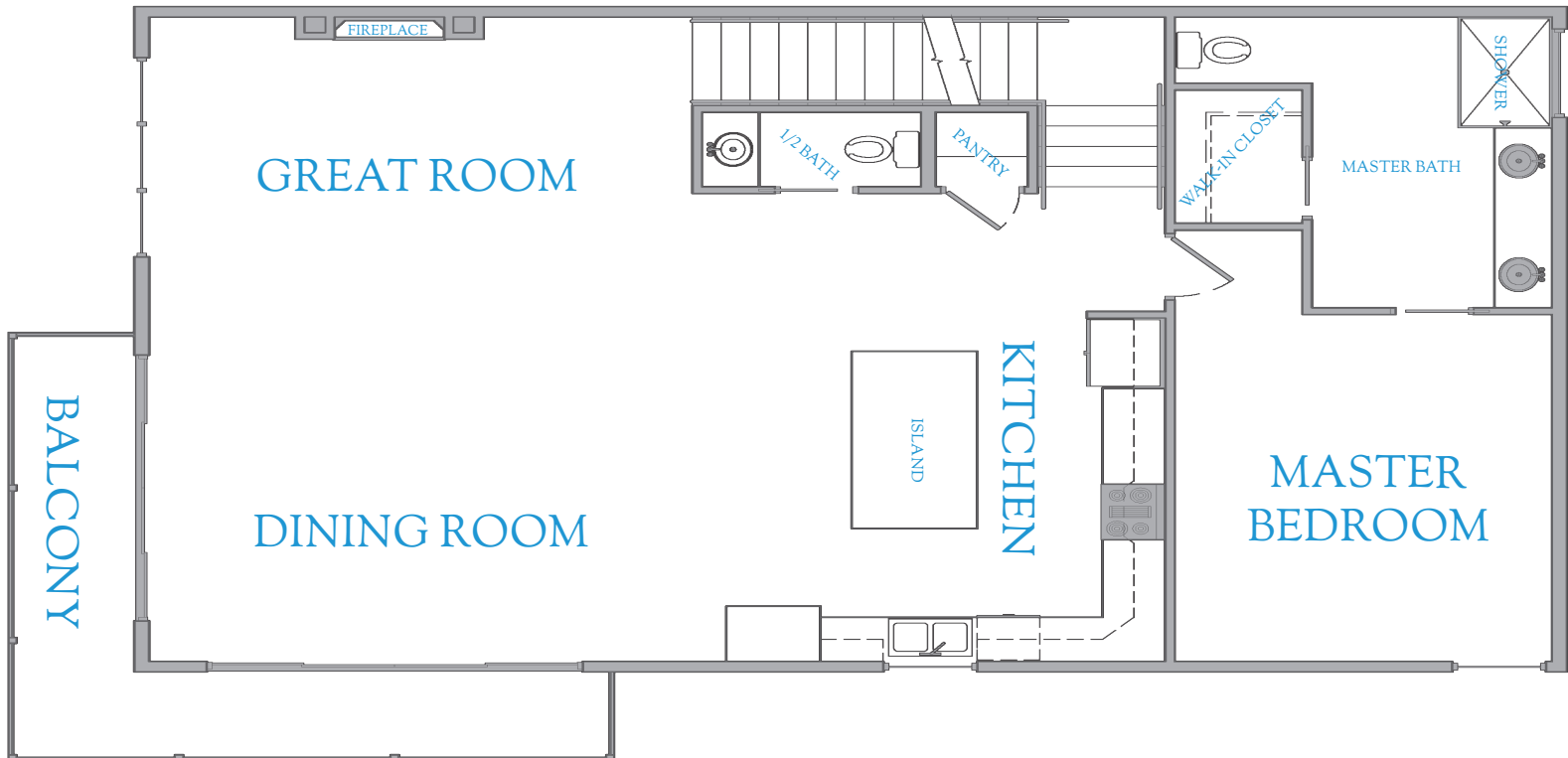
- 775 SQFT

BRIDGEPOINTEMO.COM



LAKEVIEW

## MAIN FLOOR



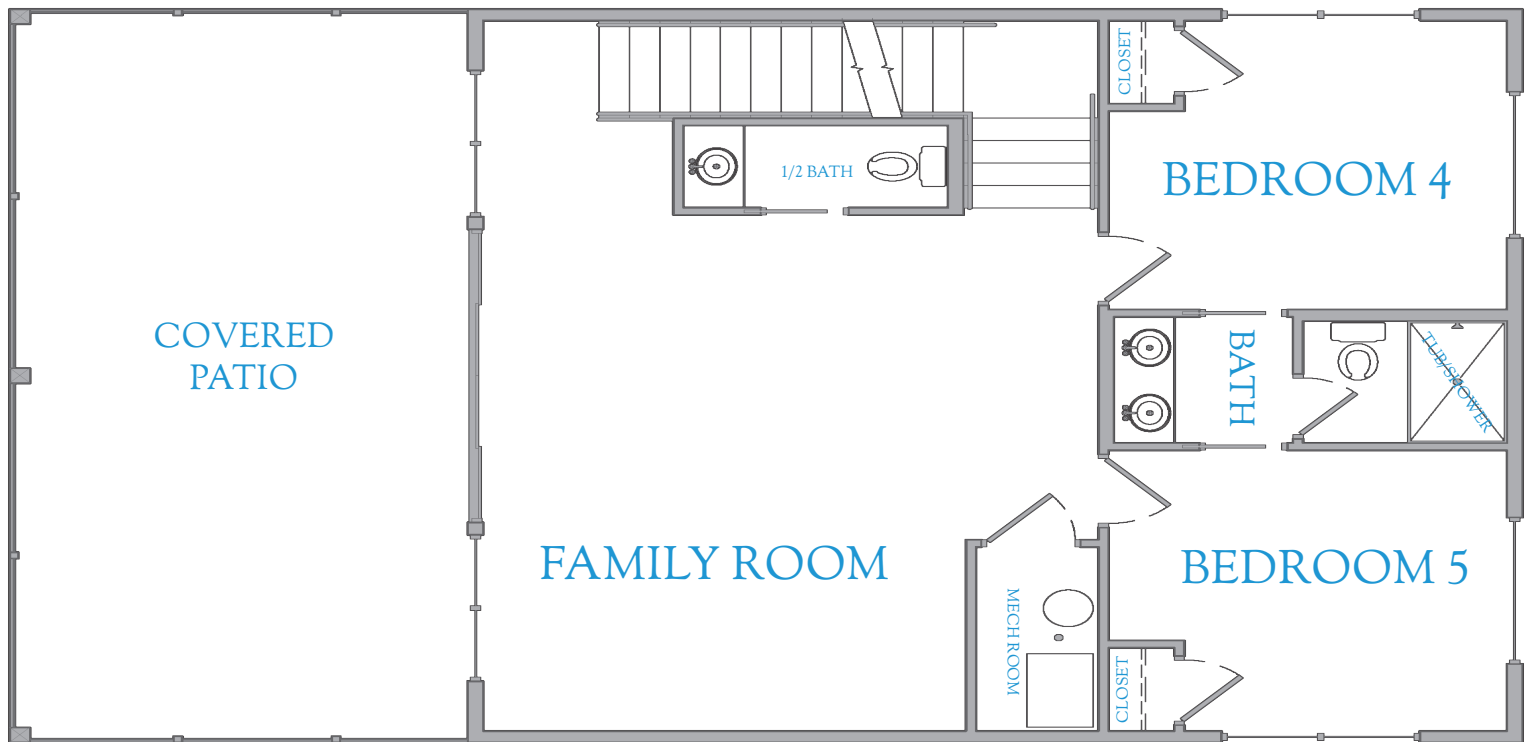
- 1370 SQ FT
- MAIN LEVEL MASTER SUITE

- BALCONY
- POWDER ROOM

- OPEN CONCEPT KITCHEN  
WITH ISLAND AND LARGE  
DINING SPACE

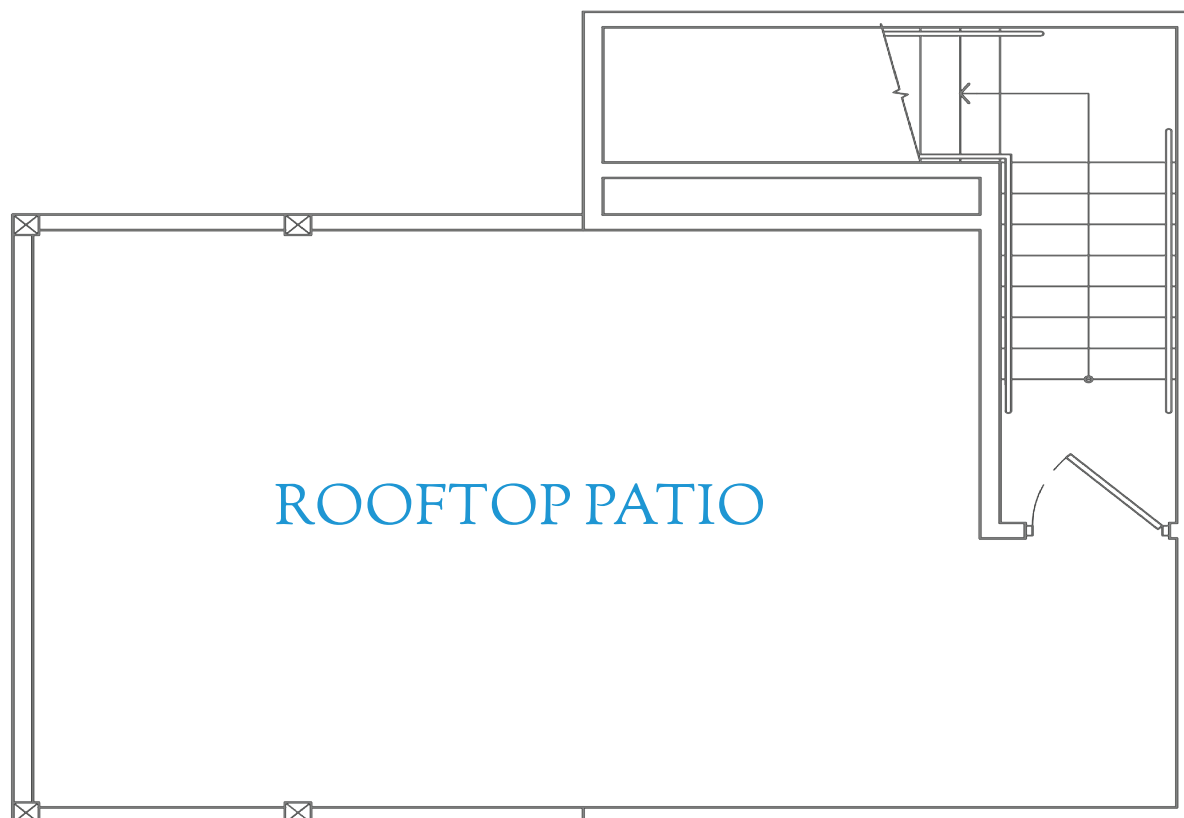
BRIDGEPOINTEMO.COM

## UPPER FLOOR



- LARGE OPEN FAMILY ROOM
- 2 LARGE BEDROOMS WITH JACK & JILL BATH
- POWDER ROOM
- LARGE COVERED PATIO
- 955 SQFT

## ROOFTOP



- LUXURIOUS ROOF TOP PATIO
- 485 SQFT
- SPACIOUS OUTDOOR GATHERING SPACE WITH MOUNTED ENTERTAINMENT SYSTEM
- BREATHTAKING VIEWS OF TABLE ROCK LAKE

## THE LAKEVIEW

LOT 12	\$1,436,688.00
LOT 13	\$1,436,688.00
LOT 14	\$1,436,688.00
LOT 15	\$1,436,688.00
LOT 16	\$1,436,688.00
LOT 17	\$1,436,688.00
LOT 18	\$1,436,688.00
LOT 19	\$1,436,688.00
LOT 20	\$1,436,688.00
LOT 21	\$1,436,688.00
LOT 22	\$1,436,688.00
LOT 23	\$1,436,688.00
LOT 24	\$1,386,688.00
LOT 25	\$1,386,688.00
LOT 26	\$1,386,688.00



*This modern architectural masterpiece is a 3100 sq ft home featuring 5 Bedrooms with 5 Bathrooms, offering every luxury of modern-day life. With all the lifestyle options one would expect like a garage, and a custom roof top patio; to enjoy four seasons of beauty on Table Rock Lake. At Bridge Pointe, the passion is to “elevate the experience” ingrained at every stage. Now, you can have it all Luxury~Lake~Lifestyle.*

BRIDGEPOINTEMO.COM

# BRIDGE POINTE

## CONSTRUCTION AND SYSTEMS

---

- 2x6 Exterior Walls
- High-Efficiency HVAC
- Metal Standing Seam Roof
- Programmable Thermostat
- Pre-wired for cable in Living Rooms and Bedrooms
- High Efficiency Cased Windows
- Wood Doors
- Smoke Detectors
- Aluminum Soffit & Fascia
- Carbon Monoxide Detectors
- Hardy Fiber Cement Vertically
- Fire Suppression System
- All infrastructure that Includes: Utilities, Site Concrete, Underground Plumbing, and Slabs

## INTERIOR

---

- Solid Wood Doors
- Modern Style finishes and cabinetry
- Smooth Finish Walls
- Nickel Plumbing Fixture Package
- Quality Interior Light Fixtures & Plumbing Package
- European Wood Flooring Throughout
- Fireplace
- Custom Tile Flooring in Wet Areas
- 6 Inch Trim & Crown Molding

## EXTERIOR

---

- Lush Landscaping with sprinkler system
- Spacious Decks & Rooftop Patios all with Panoramic Views of Table Rock Lake
- Stylish Exterior Lighting

Renderings and other details may change at the discretion of the developer. Subject to availability. Representative only.

## STANDARD FEATURES

BRIDGEPOINTEMO.COM